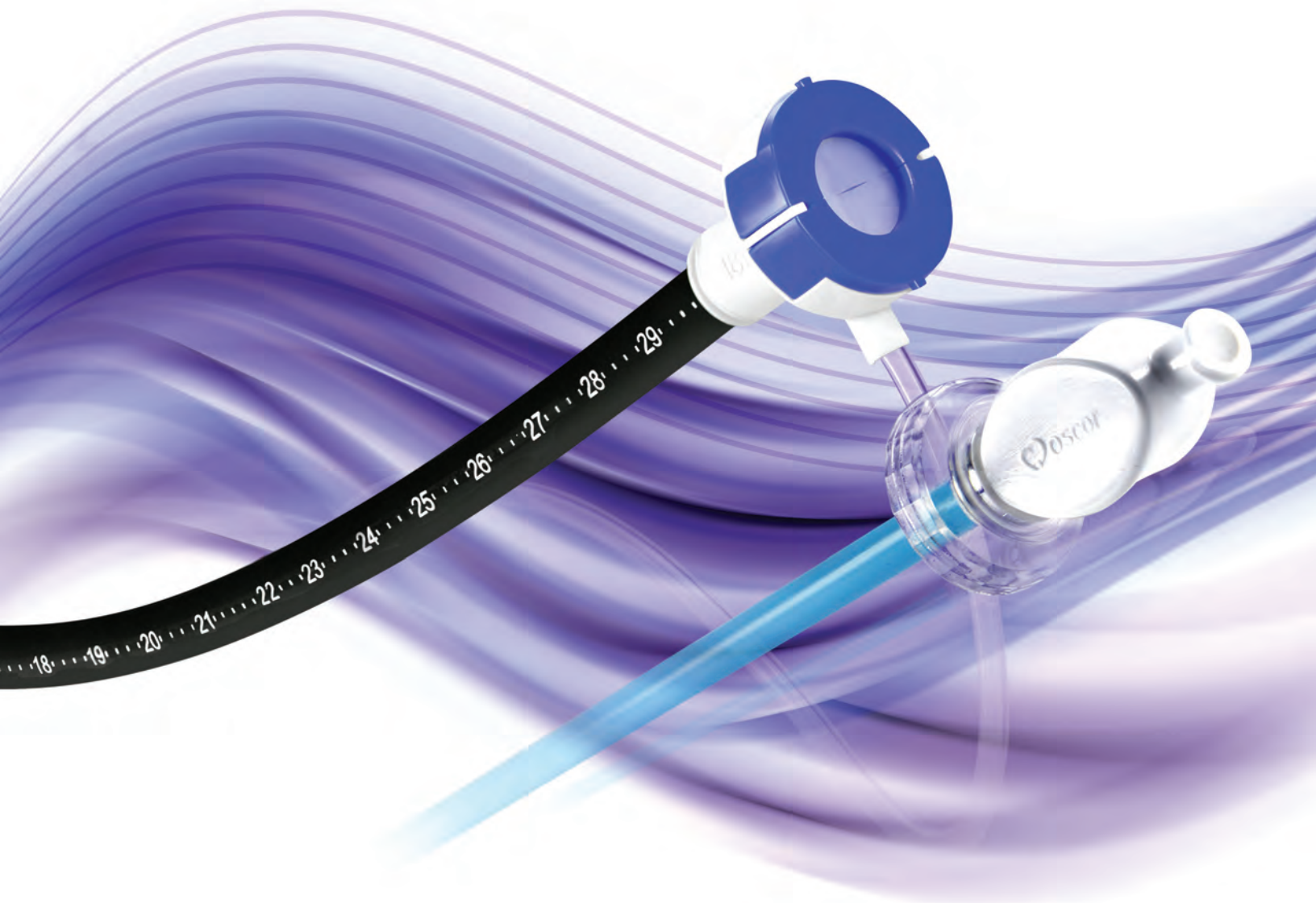




MAGNUM



Adelante[®] **MAGNUM**

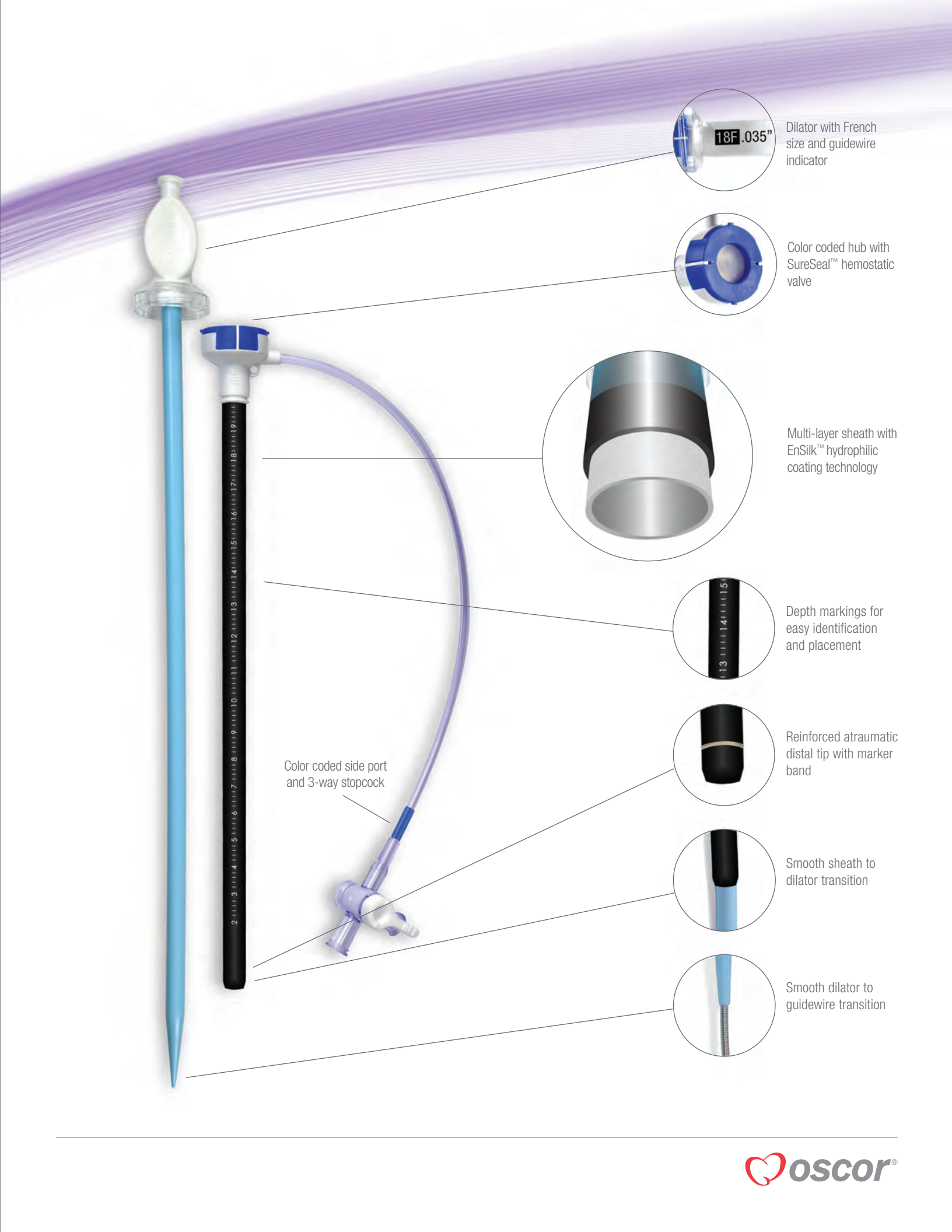
HEMOSTATIC VALVE INTRODUCER
FOR LARGE VASCULAR ACCESS

The Adelante® **MAGNUM** is a high performance hemostatic valve introducer for large size vascular access. The Adelante® Magnum features a proprietary multilayer hydrophilic coated sheath, having a special designed distal tip portion to accept and tolerate the insertion and manipulation of large and complex devices. The Adelante® Magnum SureSeal™ technology facilitates optimum hemostasis, allowing the insertion of multiple catheters and wires simultaneously with minimal blood loss.

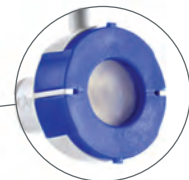


Features:

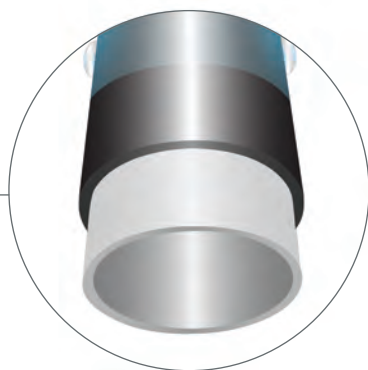
- Reliable SureSeal™ hemostatic valve technology to minimize blood loss and air embolism even with the insertion of several devices and wires
- Fluid-activated hydrophilic coated sheath, featuring Oscor's proprietary EnSilk™ coating, for exceptional sheath insertion and access
- Multi-layer sheath design provides exceptional kink resistance, while maintaining superb flexibility
- Clear markings on sheath to indicate insertion depth
- Enhanced atraumatic distal sheath tip with radiopaque marker band for accurate positioning under fluoroscopy
- Dilator locks secure into sheath and accepts maximum guidewire up to 0.038"/0.96 mm



Dilator with French size and guidewire indicator



Color coded hub with SureSeal™ hemostatic valve



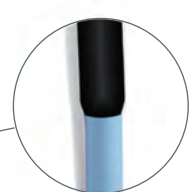
Multi-layer sheath with EnSilk™ hydrophilic coating technology



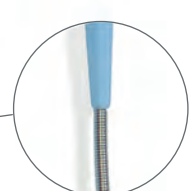
Depth markings for easy identification and placement



Reinforced atraumatic distal tip with marker band



Smooth sheath to dilator transition

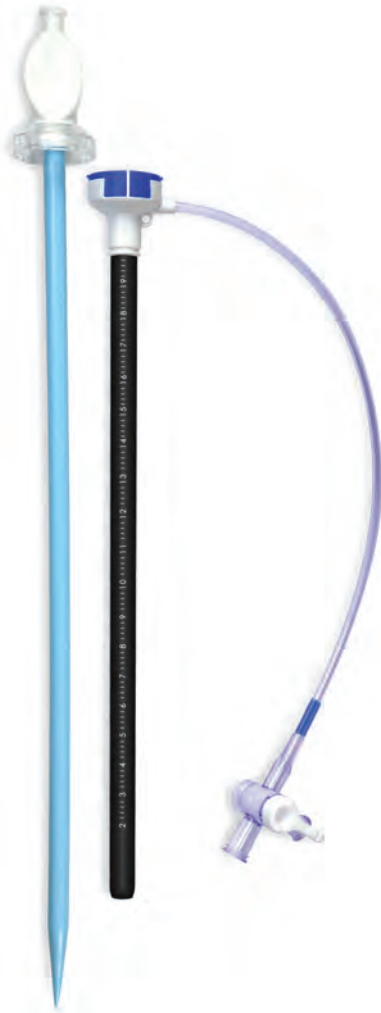


Smooth dilator to guidewire transition

Color coded side port and 3-way stopcock

ORDERING INFORMATION

Adelante® Magnum Set - Includes (1) One Sheath, and (1) One Dilator



**MODEL #
SET**
(One per box)

**FRENCH
SIZE**

**SHEATH
LENGTH**

**DILATOR
LENGTH**

16 F

| | | | |
|-----------|--------|-------|-------|
| ASM016020 | ● 16 F | 20 cm | 25 cm |
| ASM016030 | ● 16 F | 30 cm | 35 cm |
| ASM016035 | ● 16 F | 35 cm | 40 cm |

18 F

| | | | |
|-----------|--------|-------|-------|
| ASM018020 | ● 18 F | 20 cm | 25 cm |
| ASM018030 | ● 18 F | 30 cm | 35 cm |

Introducers supplied sterile. For single use only. Available bulk upon request.

Standard lengths are noted above. Other lengths available upon request.

For additional information, e-mail us at sales@oscor.com

Products not available in all regions.



P: 727.937.2511
F: 727.934.9835
E: sales@oscor.com
www.oscor.com

CAUTION: Federal Law restricts this device to sale by or on the order of a physician (U.S.A.). Please refer to the Instructions for Use for a complete listing of the indications, contraindications, precautions and warnings, where applicable.

